

THE RURAL MUNICIPALITY OF MARQUIS NO. 191

BYLAW NO. 1/11

A BYLAW TO AMMEND BYLAW NO. 3/93 KNOWN AS THE ZONING BYLAW

The Council of the Rural Municipality of Marquis No. 191, in the Province of Saskatchewan, enacts to amend bylaw no. 3/93 as follows:

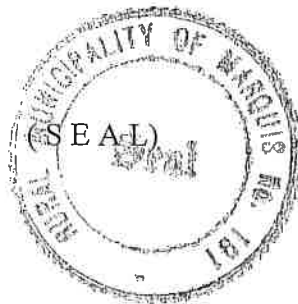
1. The Zoning District Map referred to in Section 3 of Part IV-ZONING DISTRICTS is amended by rezoning from A-Agricultural District to LD-Lakeshore Development all the land shown within the bold dashed line on the attached plan of proposed subdivision dated March 16, 2011, and signed by Larry McLeod, Saskatchewan Land Surveyor, which forms a part of the bylaw.
2. This Bylaw shall come into force and take effect when approved by the Minister.



REEVE



ADMINISTRATOR

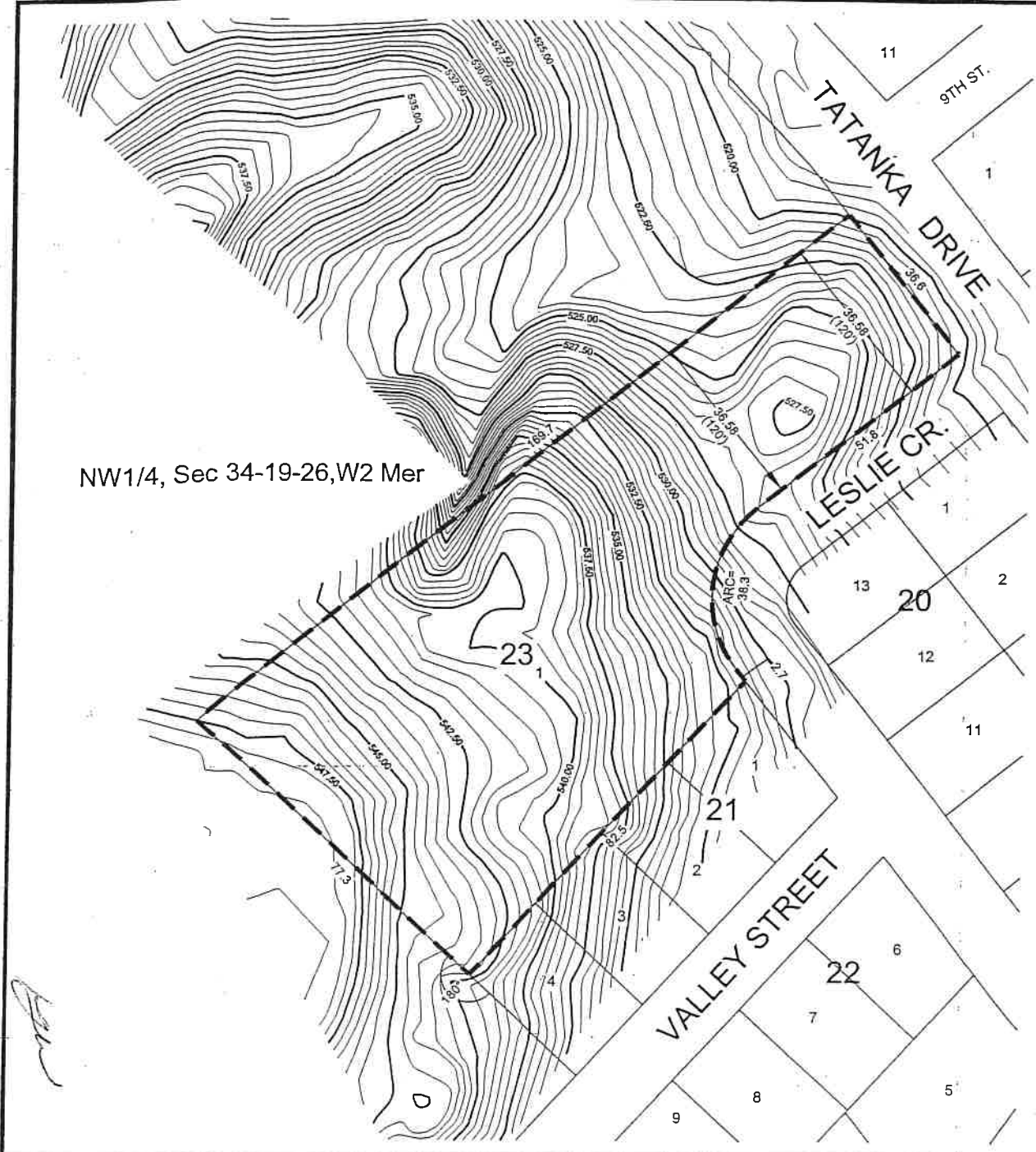


Certified a true copy of Bylaw 1/11 passed by resolution of the RM of Marquis No. 191 on the 12th day of July 2011.



Administrator





**PLAN OF PROPOSED SUBDIVISION
OF PART OF
NW1/4 SEC34, TWP19, RGE26, W2 Mer
IN THE
R.M. OF MARQUIS No. 191
SASKATCHEWAN
2010
SCALE= 1:2000**

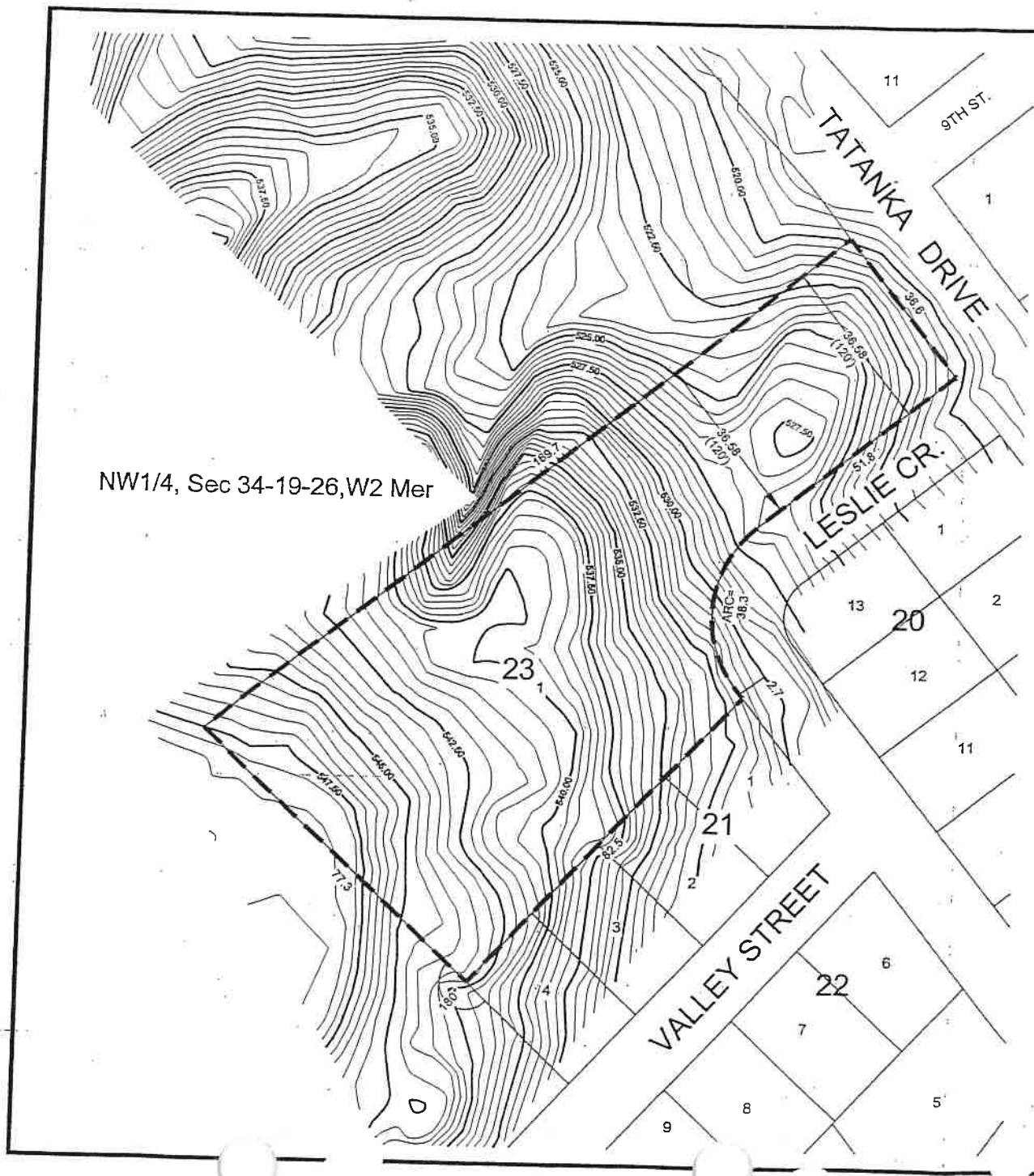
- NOTE:
- MEASUREMENTS ARE IN METRES AND DECIMALS THEREOF.
 - AREA TO BE APPROVED IS OUTLINED IN A BOLD DASHED LINE AND CONTAINS 0.91 HA (2.24 AC).
 - SOME MEASUREMENTS ARE APPROXIMATE AND MAY DIFFER FROM THE FINAL PLAN BY AS MUCH AS 1.0%
 - CONTOURS ARE GEODETIC AND ARE AT 0.5m INTERVALS.
 - CONTOURS PROVIDED BY GEOFOCUS MAPPING INC. USING AIRPHOTO DATED MAY 7th, 1999.

CERTIFIED CORRECT THIS 16TH DAY OF MARCH, A.D. 2011.

Larry W. McLeod
LARRY W. McLEOD
SASKATCHEWAN LAND SURVEYOR



MP



**PLAN OF PROPOSED SUBDIVISION
OF PART OF
NW1/4 SEC34, TWP19, RGE26, W2 Mer
IN THE
R.M. OF MARQUIS No. 191
SASKATCHEWAN
2010**

SCALE= 1:2000

- NOTE:
- MEASUREMENTS ARE IN METRES AND DECIMALS THEREOF.
 - AREA TO BE APPROVED IS OUTLINED IN A BOLD DASHED LINE AND CONTAINS 0.91 HA (2.24 AC).
 - SOME MEASUREMENTS ARE APPROXIMATE AND MAY DIFFER FROM THE FINAL PLAN BY AS MUCH AS 1.0%
 - CONTOURS ARE GEODETIC AND ARE AT 0.5m INTERVALS.
 - CONTOURS PROVIDED BY GEOFOCUS MAPPING INC. USING AIRPHOTO DATED MAY 7th, 1999.

CERTIFIED CORRECT THIS 16TH
DAY OF MARCH, A.D. 2011.

Larry W. McLeod
LARRY W. McLEOD
SASKATCHEWAN LAND SURVEYOR



KEY PLAN



R-0148-10